

*Sleek, rugged and easy to use, the Photometer 7500 is the ideal field instrument for water engineers.*

## Photometer 7500

The Palintest Photometer 7500 takes portable water testing to new heights. Its smooth good looks cover a solidly engineered instrument with a high specification and high performance.

**NEW** Test DEHA from 0.01 - 0.500 mg/l

**NEW** Test Boron from 0 - 2.5 mg/l

- Automatic method set up for each parameter
- USB port for easy computer interface
- 500 test results stored on board
- Unique adaptive cell holder

Built around the Palintest range of water test reagents, the Photometer 7500 has automatic wavelength selection for each of its pre-programmed methods. Method selection is either from a simple on-screen menu or by direct entry. There are up to 15 user definable test methods allowing full flexibility in a range of applications.

The unique adaptive cell holder automatically adjusts to any round tube size - allowing easy analysis of a range of samples without needing adapters.

The software remembers your most recent tests, making it even quicker to use the next time around. Up to 500 test results are held in the on-board memory with a full audit trail of time, date and results in chosen units.

Once back at base the test results are effortlessly transferred to a PC by plugging into the USB port and using the drag and drop file transfer utility. In the same way, software updates can be sent by e-mail or downloaded from the Internet, and simply dropped into the Photometer 7500.

The unit runs on standard 'AA' batteries or can be powered through the USB port from the computer, or via its own standalone adapter.

The software interface is in five languages and the easy to navigate menus are great for the engineer in a hurry.

The Photometer 7500 is available in two kits, each complete with a carry case with space to store reagents.



### Technical Specifications

Instrument Type	Direct-reading colorimeter with automatic set-up and reading
Operating Wavelengths	450 nm, 500 nm, 550 nm, 570 nm, 600 nm and 650 nm
Display	Large Backlit graphic LCD screen
Accuracy	± 0.5% at 4% transmittance ± 0.005 at 0.3 AU
Resolution	0.001 AU
User Selectable Options	Time/Date format, display language, test units, sample number and dilution factors
Internal Memory	500 sample results stored with selective recall
Data Output	Waterproof USB interface
Test Cells	Automatic adjustment for round test tubes from 12 - 20 mm diameter
Power	Battery power (3 x 'AA') - optional power through USB port from computer or mains adapter
Size	W146 x D275 x H75 mm
Weight	975g
Instrument Rating	Waterproof IP67

**Palintest Ltd**  
Palintest House, Kingsway, Team Valley,  
Gateshead, Tyne & Wear, NE11 0NS,  
England  
**Tel:** +44 (0) 191 491 0808  
**Fax:** +44 (0) 191 482 5372  
**Email:** sales@palintest.com  
**Website:** www.palintest.com

**Palintest USA**  
21 Kenton Lands Road, Erlanger,  
Kentucky 41018, USA  
**Tel:** (859) 341 7423  
**Toll Free:** 800 835 9629  
**Fax:** (859) 341 2106  
**Email:** info@palintestusa.com  
**Website:** www.palintestusa.com

**Palintest Australia/Asia Pacific**  
1/53 Lorraine Street,  
Peakhurst Business Centre,  
Peakhurst NSW 2210, Australia  
**Tel:** 1300 131516 **Fax:** 1300 131986  
**Email:** palintest@palintest.com.au  
**Website:** www.palintest.com.au

**Palintest China**  
Room 1601, Kun Tai International  
Mansion, 12B Chao Yang District,  
Beijing, 100020, PRC  
**Tel:** +86-10 5126 1868 - 809  
**Fax:** +86-10 58790155  
**Email:** fred.fan@palintest.com  
**Website:** www.palintest.cn

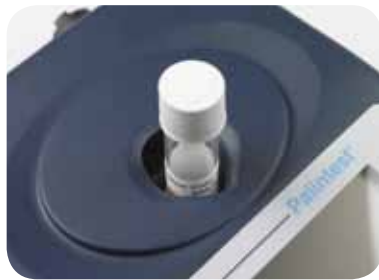
A HALMA COMPANY



# Photometer Kits

## PT 750 Standard Photometer 7500 Kit

The Standard Photometer 7500 kit comprises a Photometer 7500 instrument, eight glass (10 ml) test tubes, 10 crushing rods, a dilution tube, 10 ml syringe, a test tube brush and a photometer USB lead. The kit contents are stored in a moulded plastic carrying case. Reagents are sold separately.



## PT 752 Engineers Photometer 7500 Kit

The Engineers Photometer 7500 kit is specifically designed for the mobile water service engineer. It contains a Photometer 7500 instrument, eight glass (10 ml) test tubes, De-ion pack, dilution tube, sample container, 10 crushing rods, filtration equipment, USB lead, test tube brush and a thermometer.

The kit is supplied in a reinforced carrying case with space to hold a supply of reagents. The case is fitted with a meter bag and a detachable document holder. It is designed so that engineers can carry test meters and other equipment as desired. The case also has room for a number of Palintest liquid reagents. Reagents are sold separately.

PT 804 Check Standards for Photometer 7500

PT 745 USB Power supply for Photometer 7500

PT 746 USB Cable for Photometer 7500

PT 265 Alkaline Batteries for Photometer 7500

PT 595/5 Round Test Tubes, 10ml, pack of 5

# Reagents

TEST	RANGE (mg/l)	REAGENT STARTER PACKS (50 TESTS)	REAGENT REFILL PACKS (250 TESTS)
Alkalinity Total (Alkaphot)	10-500 (CaCO <sub>3</sub> )	PM 188	AP 188
Alkalinity M (Alkaphot M)	10-500 (CaCO <sub>3</sub> )	PM 250	AP 250
Alkalinity P (Alkaphot P)	10-500 (CaCO <sub>3</sub> )	PM 251	AP 251
Aluminium	0.02-0.5	PM 166	AP 166
Ammonia	0.01-1.0 (N)	PM 152	AP 152
Boron	0-2.5 (B)	PM 190	AP 190-
Bromine	0.04-10.0	PM 060	AP 060
Calcium Hardness (Calcicol)	5-500 (CaCO <sub>3</sub> )	PM 252	AP 252
Chloride (Chloridol)	0.5-50 (NaCl)	PM 268	AP 268
Chlorine DPD 1	0.01-5.0	PM 011	AP 011
Chlorine DPD 2	0.01-5.0	PM 021	AP 021
Chlorine DPD 1 & 3	0.01-5.0	PM 031	AP 031
Chlorine DPD 4	0.01-5.0	PM 041	AP 041
Chlorine HR (High Range)	1-250	PM 162	AP 162
Chlorine Dioxide (DPD)	0.2-9.5	PM 052	AP 052
Chlorine Dioxide LR (Low Range)	0.03-2.5	PM 064	AP 064
Chlorine Dioxide HR (High Range)	0.45-20	PM 065	AP 065
Chromium (VI) (Chromicol)	0.02-1.0	PM 281	AP 281
Copper (Coppercol) (free, combined, and total)	0.03-5.0	PM 186	AP 186
Copper (free)	0.03-5.0	-	AP 187
Colour/Turbidity	10-500 (Hazen units)	PM 269	-
Cyanuric Acid	2-200	PM 087	AP 087
DEHA	0.01-0.500	PM 275	AP 275
Dissolved Oxygen (0.8/vials)	0.02-0.8	PL 553 <sup>†</sup>	PL 553/R <sup>†</sup>
Dissolved Oxygen (2.0/vials)	0.05-2.0	PL 503 <sup>†</sup>	PL 503/R <sup>†</sup>
Dissolved Oxygen (20/vials)	0.2-20	PL 513 <sup>†</sup>	PL 513/R <sup>†</sup>
Fluoride	0.1-1.5	PM 179	AP 179*
Hardness (Hardicol)	5-500 (CaCO <sub>3</sub> )	PM 254	AP 254
Hydrazine	0.05-0.5	PM 103 <sup>†</sup>	AP 103 •
Hydrogen Peroxide LR	0.02-2.0	PM 104	AP 104
Hydrogen Peroxide HR	1-100	PM 105	AP 105
Iron LR	0.01-1.0	-	AP 155
Iron HR	0.05-10	PM 156	AP 156
Iron MR	0.02-5.0	PM 292	AP 292
Magnesium (Magnecol)	2-100	PM 193	AP 193
Manganese	0.001-0.03	PM 173	AP 173
Manganese HR	0.02-5.0	PM 174	AP 174
Molybdate LR	0.2-15	PM 258	AP 258*
Molybdate HR	0.5-100	PM 175	AP 175
Nickel (Nickeltest)	0.12-10	PM 284	AP 284*
Nitrate (Nitratest)	0.2-20 N	PM 163	AP 163*
Nitrite (Nitricol)	0.01-0.5 N	PM 109	AP 109
Nitrite (Nitriphot)	10-1500 (NaNO <sub>2</sub> )	PM 260	AP 260
Organophosphonate (OP)	0.2-20 (PO <sub>4</sub> )	PM 262	AP 262
Ozone	0.01-2.0	PM 056	AP 056
pH (phenol red)	6.8-8.4	PM 130	AP 130
Phenol (Phenoltest)	0.07-5.0	PM 287	AP 287*
PHMB	2-100	PM 272	AP 272
Phosphate LR	0.03-4.0	PM 177	AP 177*
Phosphate HR	1-100	PM 114	AP 114
Potassium	0.5-12	PM 189	AP 189
Silica	0.02-4.0	PM 181	AP 181*
Silica HR	0.5-150	PM 290	AP 290*
Sulphate	5-200	PM 154	AP 154
Sulphide	0.01-0.5	PM 168	AP 168*
Sulphite (Sulphitest)	5-500 (Na <sub>2</sub> SO <sub>3</sub> )	PM 266	AP 266
Zinc	0.02-4.0	PM 148	AP 148

\*200 tests - 160 Tests • 150 tests † 30 tests